

Installation Requirements

Electrics: The unit must be installed to comply with current UK electrical regulations, with a fused spur rated at 3 amps. We advise that this is done by a registered electrician.

This appliance must be earthed. If the supply cord is damaged, it must be replaced by a qualified person. The cable type is H05VV-F, 3G0.75mm² VDE. The IP rating of this appliance is IP54.

Water: The unit is designed for a horizontal toilet outlet with the standard European 18cm to the outlet centre from the floor. All other inlets must be gravity fed into the unit. The outlet comes as standard with a 32mm connection however 22mm can be used with a reducer. **If using bends in the connecting pipe work ensure they are smooth curves to avoid blockages.**

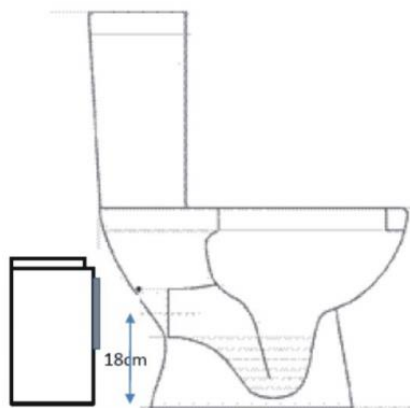
Specification: Water temperature should be a minimum of 1°C it is important that the unit does not freeze, and a maximum of 40 °C. Maximum vertical discharge 5.5 m. Maximum horizontal discharge 60m.

Inputs

The macerator can be used with multiple inputs, or just one. Blanking plates are provided to help you.

Installation

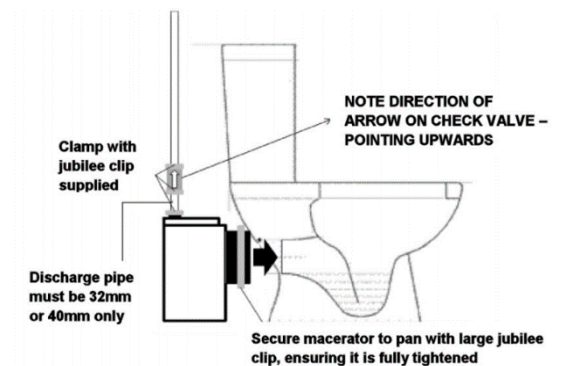
The electrical installation of this product must be done by qualified persons only.



This macerator is only for use with a toilet using a horizontal outlet. The toilet must also have a flushing tank or tap. **Note: the horizontal outlet must be 18cm above floor level in accordance with EU standards.**

Discharge pipe length to the first elbow must be a minimum length of 0.5m.

Toilet Only Configuration



- Place this horizontal toilet outlet into the macerator, and clamp the rubber sleeve of the macerator around the pipe using the supplied jubilee clip.
- Repeat for the 32mm or 40mm discharge pipe.

Check Valve

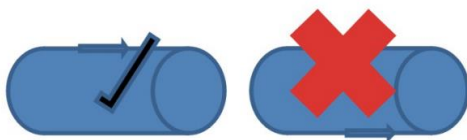
In all situations, a check valve must be fitted as closely to the macerator as possible. Ensure this distance does not exceed 30cm. Once in position, seal the connection with jubilee clips supplied. Ensure the arrow on the valve points away from the macerator.

Configuration with Other Appliances



Connect the discharge pipes of each appliance to the rubber connectors provided and clamp with supplied jubilee clamps.

For use with a bath or shower, there must be a gradient of 1cm per metre or greater. If used with a shower, a second check valve must be used. This must be fitted between the macerator and the tray. If other appliances are fitted along the discharge line, check valves must also be used on these.



Prior to first use flush a large quantity of clean water through the unit.

General Care and Maintenance

Daily Usage:

- This product is suitable for indoor use only.
- Do not put foreign objects, such as but not limited to condoms, sanitary towels, and wet wipes through the system as this will cause damage to the unit, and will invalidate your warranty.

Servicing:

- Service and cleaning should be performed once every 6 months. It is recommended that this is done by a professional.
- Before servicing, ensure the electric supply is off.
- Appropriate PPE must be used whilst servicing the unit.

Warranty

Please note the following situations that will invalidate the warranty:

- Failure to install the appliance in accordance with this installation guide.
- Installation by unqualified persons.
- Foreign objects in the system.
- Failure to carry out regular servicing/maintenance as detailed in this guide.

Product Disposal

This product should not be disposed of with other household wastes.

To prevent possible harm to the environment or human health from uncontrolled waste disposal, the unit should be disposed of at an appropriate local authority facility.



- The symbol on the appliance states that it meets the new directive (2012/19/EU) and must be handled in accordance with this standard at the end of its service life.

Trouble Shooting

Symptom	Cause	Resolution
The macerator has cut out	The device has overheated.	Leave the unit to cool for 30 mins, switch it back on and hold the override switch to reset the unit. Check for blockages.
The macerator has cut out	Power supply has been interrupted	Check fuses and power supply.
The water is back flowing	Insufficient gradient	Ensure a gradient of 1cm per meter is used.
The unit is leaking.	Check valve/jubilee clips are not fitted correctly.	Check these items.
The macerator is non-operational and has never been opened.	The macerator is connected to an incorrect size pipe.	Ensure the pipe is 32 or 40mm.
	The electrical install was incorrect.	Ensure the device was installed by a qualified person.
	The check valve is facing in the wrong direction.	Check the check valve(s).
	Pressure switch is blocked	Check/replace the pressure switch.
The macerator is not powerful enough.	Discharge pipes are too long/high	Check the distances against the spec.
	Discharge pipe is too small	Check the sizes
	Unit is blocked.	Service as per instructions above.
The macerator emits a humming noise but does not discharge waste.	Pump is blocked	Check/service pump.
	Check valve is installed the wrong way round.	Check the check valve.
The macerator discharges waste with no demand.	Check valve is faulty	Examine/replace the check valve.
	The tank is leaking	Check the tank.
	There is a partial blockage	Clear the blockage
	Pressure switch is defective	Replace the pressure switch
Macerator is not emitting a humming noise.	The unit is not properly connected to the electric supply	Check the supply
	The pressure switch is not connected.	Check by pressing the override switch several times.
	The motor is not operational	If pressing the override switch has no effect the motor may be dead.

Check out our full range of macerators

Saniflo Macerators

Flo-Force Macerators

Stuart Turner Macerators

Grundfos Macerators

Don't Forget These Macerator Accessories from Saniflo

Saniflo Sani Alarm

Saniflo Descaler

plumbworld
Big brands, small prices.